

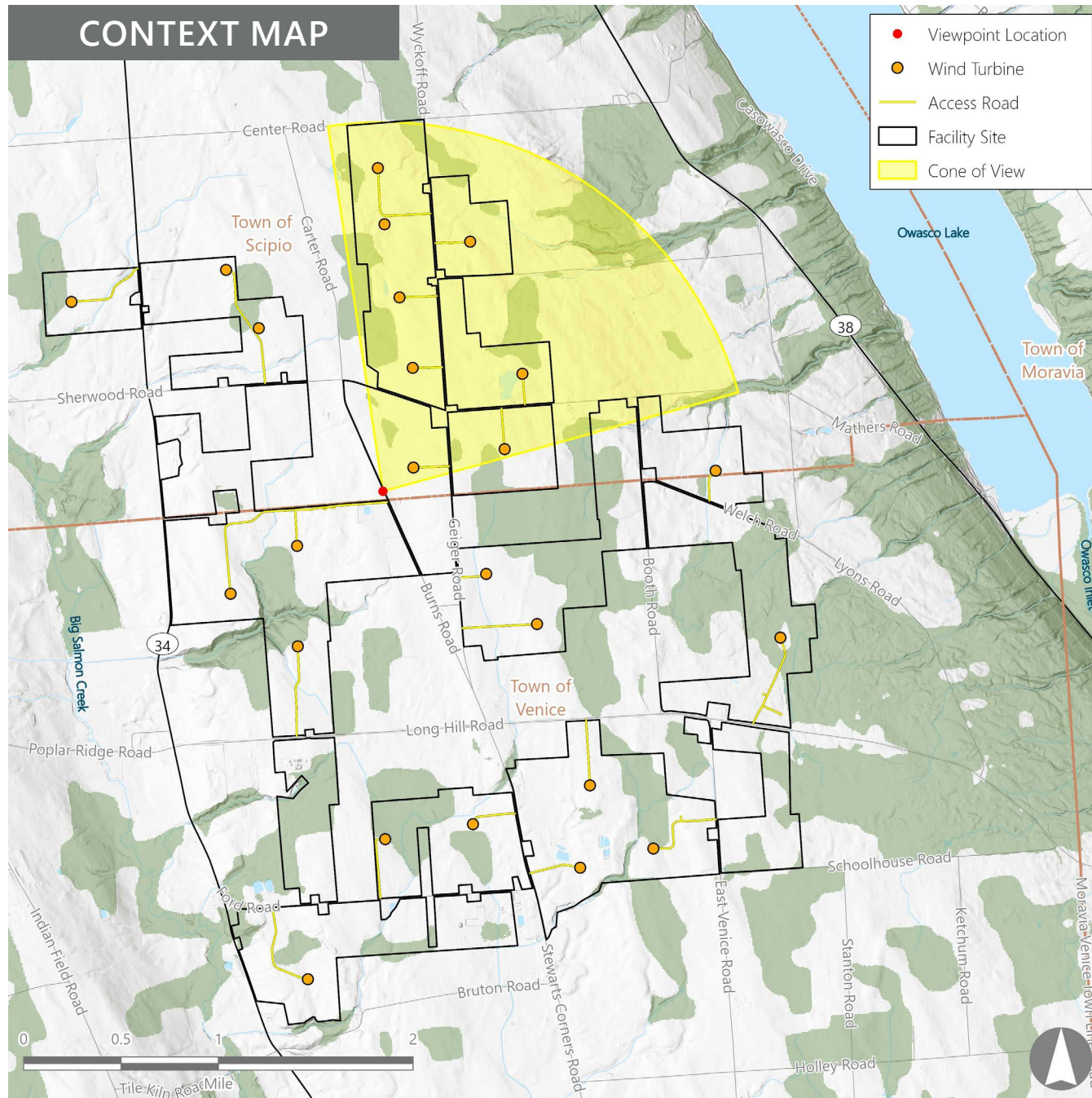
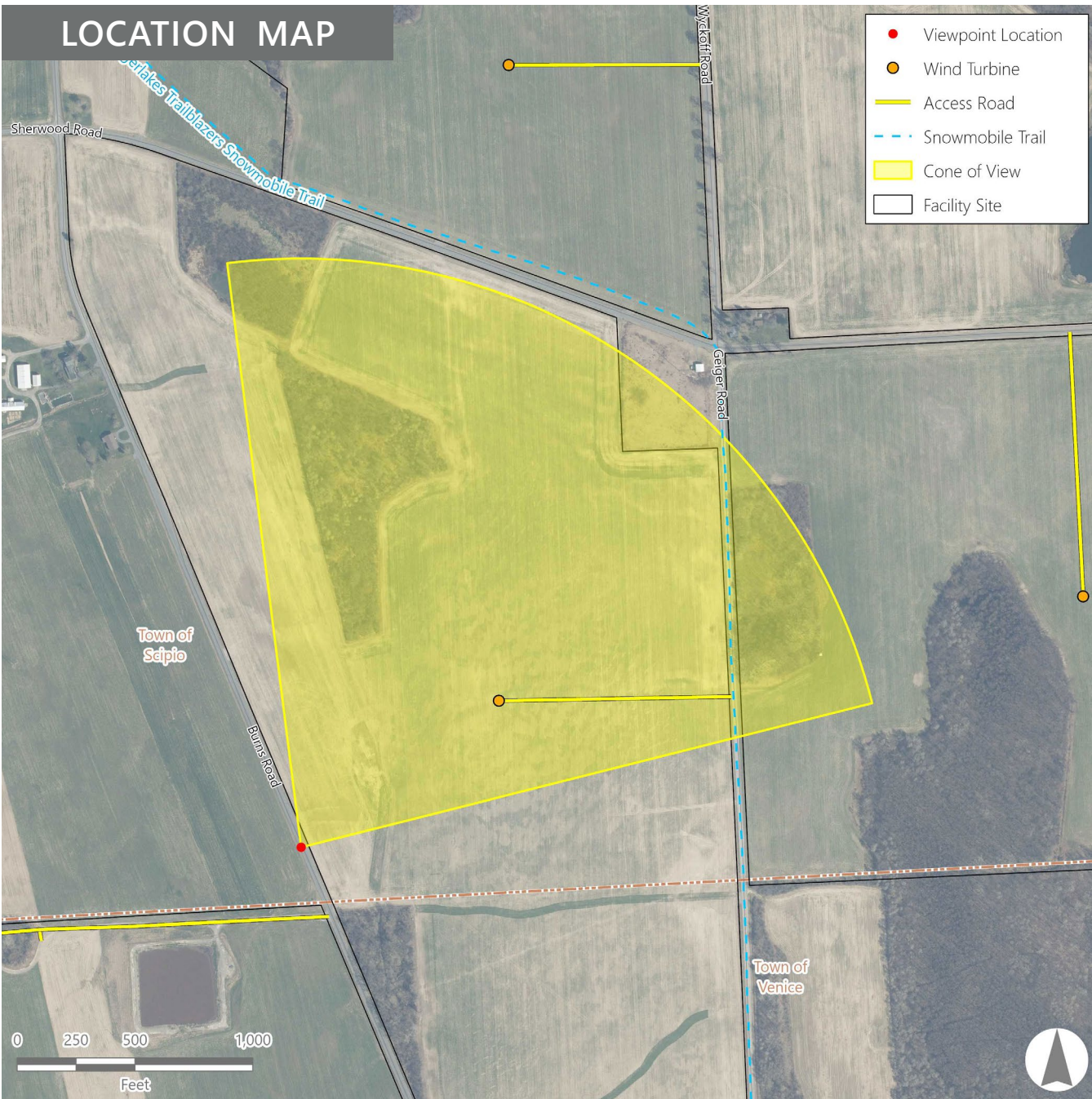


VIEWPOINT 14
Burns Road
Cayuga County, New York

PHOTOGRAPH INFORMATION	
Date:	March 12, 2024
Time:	9:36 AM
Camera:	Canon EOS 5D Mark IV
Lens Focal Length (35 mm sensor equivalent):	50 mm
Camera Elevation:	1,306.9 feet
Field of View:	83.1 degrees
Direction of View:	North to east
Printed Size:	51 inches x 15 inches
Viewing Distance**:	29 inches

Agricola Wind Project
Towns of Venice and Scipio, Cayuga County, New York

LOCATION INFORMATION	
Coordinates:	42.75683° N 76.53422° W
Distance to Nearest Visible Turbine:	0.2 miles
Distance Zone Represented:	Foreground
Landscape Similarity Zone:	Rural Upland
Viewer/User Group(s):	Local residents
Visually Sensitive Resource(s):	None identified



NOTES
**The simulation is at the correct perspective when printed on a 24-by-52 inch sheet at full scale, and viewed approximately 29 inches from the eye of the viewer.

CONCEPTUAL PHOTOSIMULATION

DRAFT



Agricola Wind Project

Towns of Venice and Scipio, Cayuga County, New York

LOCATION INFORMATION

Coordinates:	42.77122° N 76.46937° W
Distance to Nearest Visible Turbine:	1.8 miles
Distance Zone Represented:	Middle ground
Landscape Similarity Zone:	Owasco Lake
Viewer/User Group(s):	Local residents, tourists/ recreational users
Visually Sensitive Resource(s):	
VSR ID #50 - Owasco Lake	

PHOTOGRAPH INFORMATION

Date:	May 16, 2024
Time:	9:17 AM
Camera:	Canon EOS 5D Mark IV
Lens Focal Length (35 mm sensor equivalent):	50 mm
Camera Elevation:	719 feet
Field of View:	38.5 degrees
Direction of View:	Southwest to west
Printed Size:	26.8 inches x 17.8 inches
Viewing Distance**:	38 inches

NOTES

**The simulation is at the correct perspective when printed on a 24-by-36 inch sheet at full scale, and viewed approximately 38 inches from the eye of the viewer.

Prepared For:

libertyrenewables

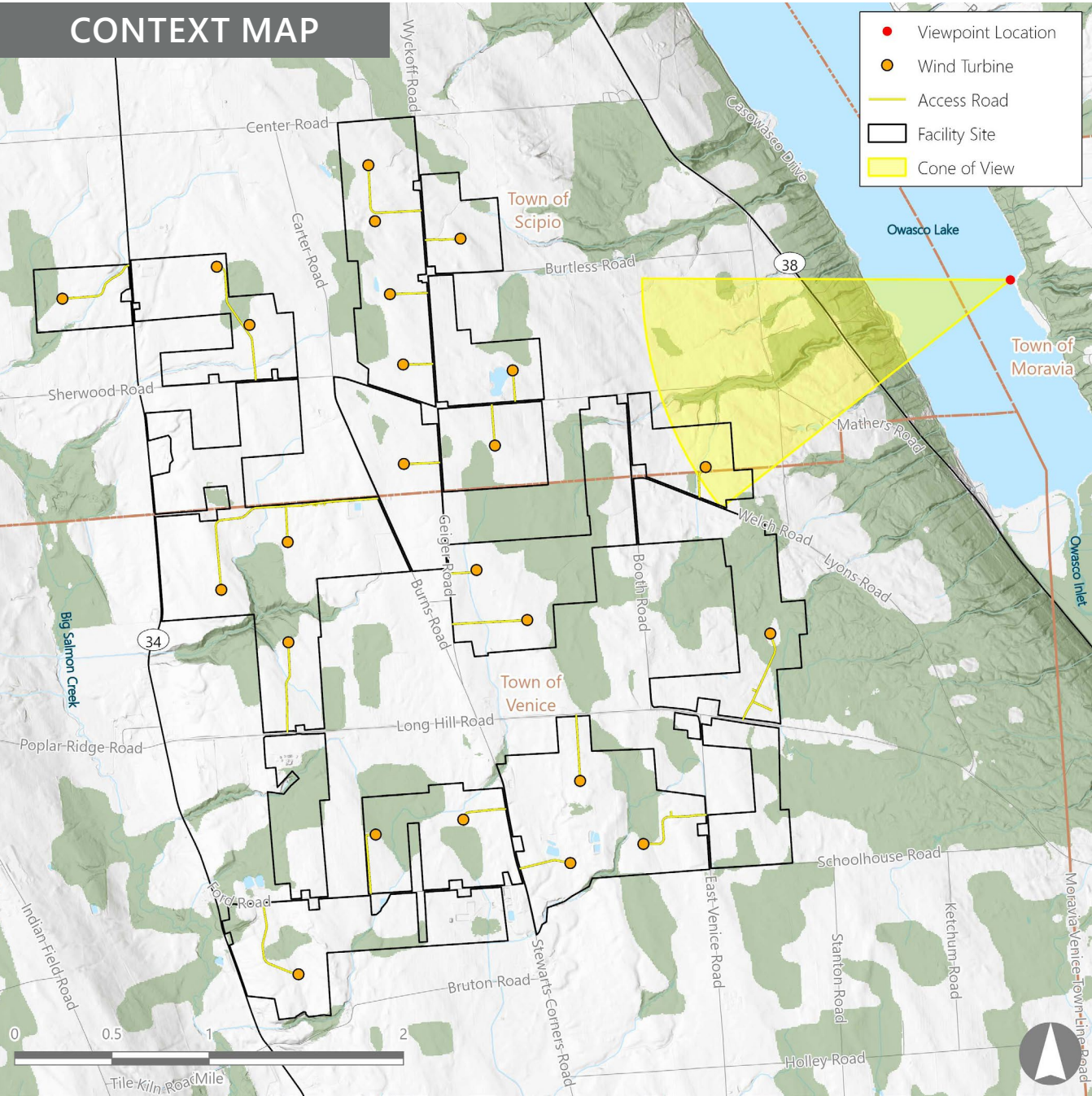
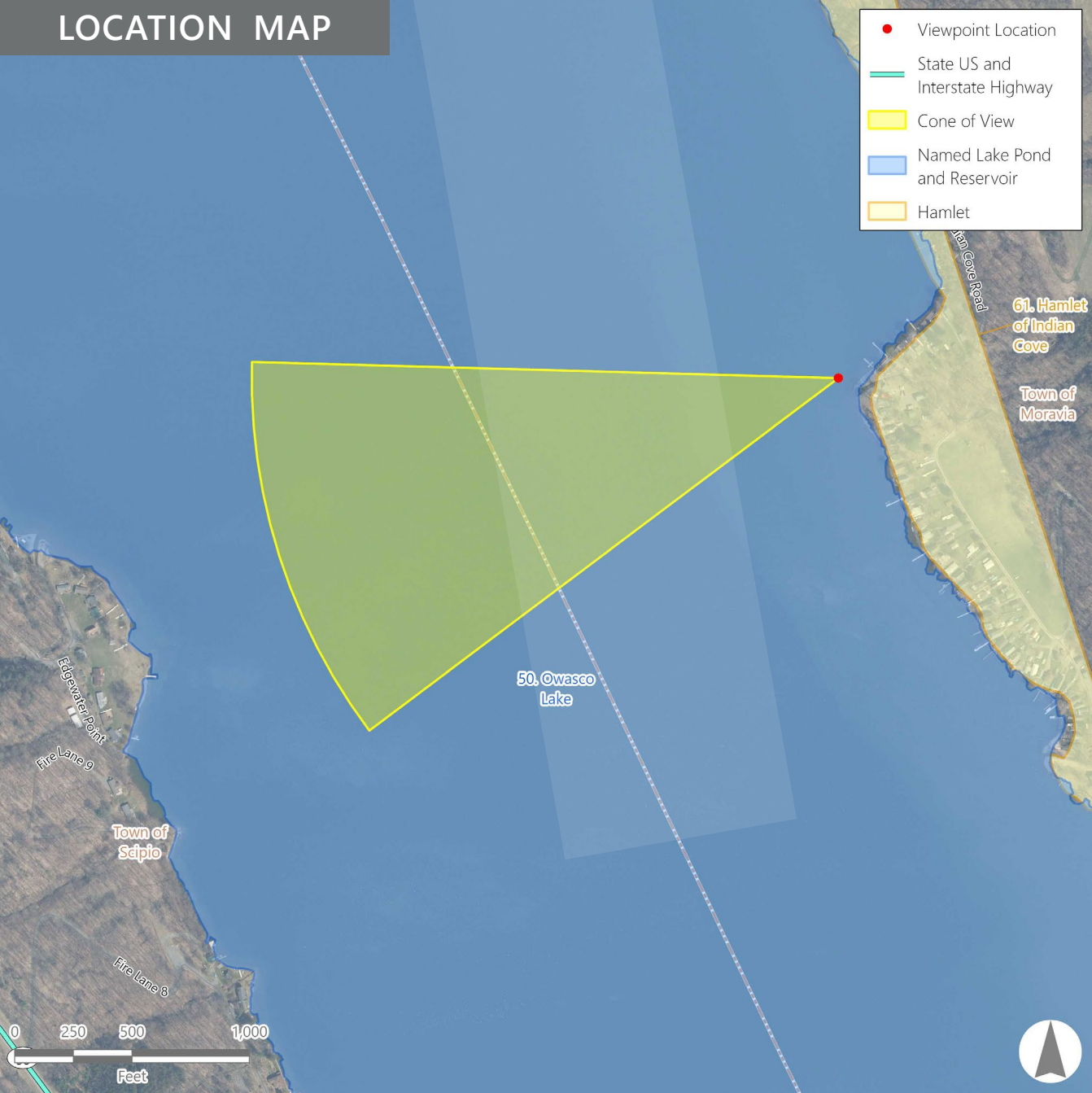
Prepared By:

EDR

VIEWPOINT 89

Owasco Lake

Town of Moravia, Cayuga County



ORIGINAL PHOTOGRAPH



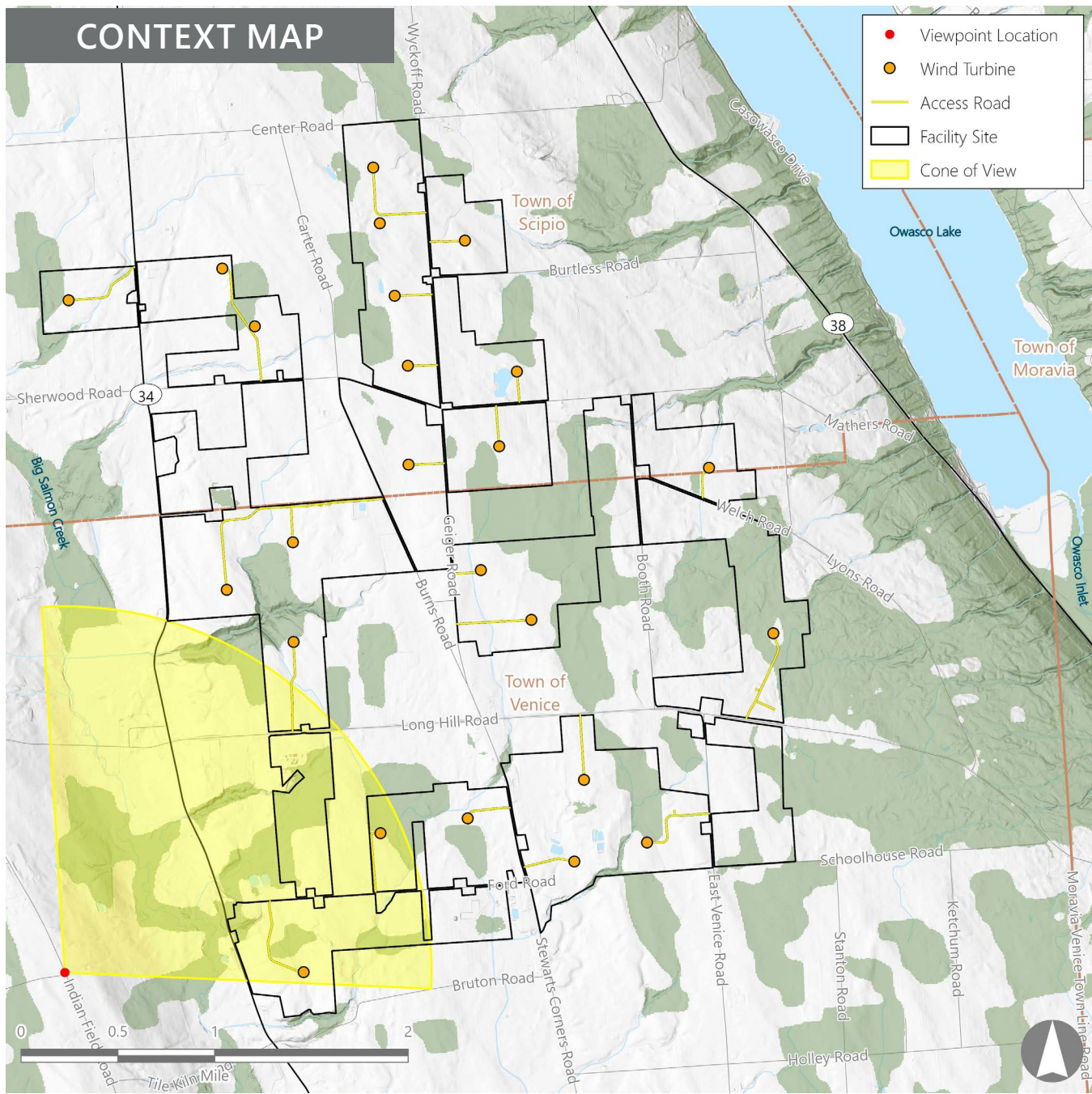
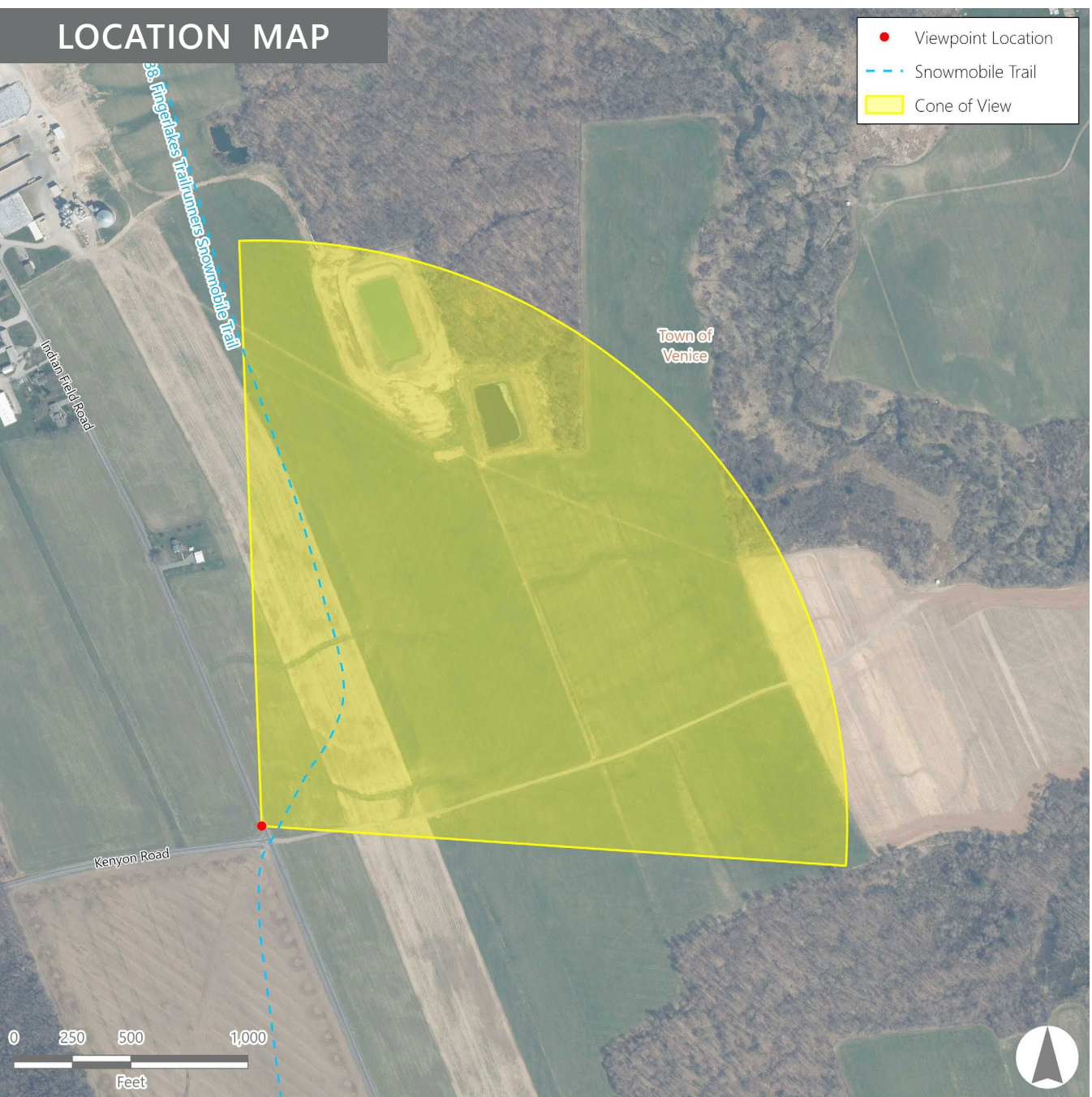


VIEWPOINT 36
Indian Field Road
Town of Venice, Cayuga County

PHOTOGRAPH INFORMATION	
Date:	March 12, 2024
Time:	12:25 PM
Camera:	Canon EOS 5D Mark IV
Lens Focal Length (35 mm sensor equivalent):	50 mm
Camera Elevation:	1,196.8 feet
Field of View:	96.1 degrees
Direction of View:	North to southeast
Printed Size:	57 inches x 14.6 inches
Viewing Distance**:	26 inches

Agricola Wind Project
Towns of Venice and Scipio, Cayuga County, New York

LOCATION INFORMATION	
Coordinates:	42.72110° N 76.56718° W
Distance to Nearest Visible Turbine:	1.2 miles
Distance Zone Represented:	Middle Ground
Landscape Similarity Zone:	Rural Upland
Viewer/User Group(s):	Local residents, tourists/recreational users
Visually Sensitive Resource(s):	
VSR ID # 38 - Fingerlakes Trailrunners Snowmobile Trail	



NOTES

**The simulation is at the correct perspective when printed on a 24-by-58 inch sheet at full scale, and viewed approximately 26 inches from the eye of the viewer.