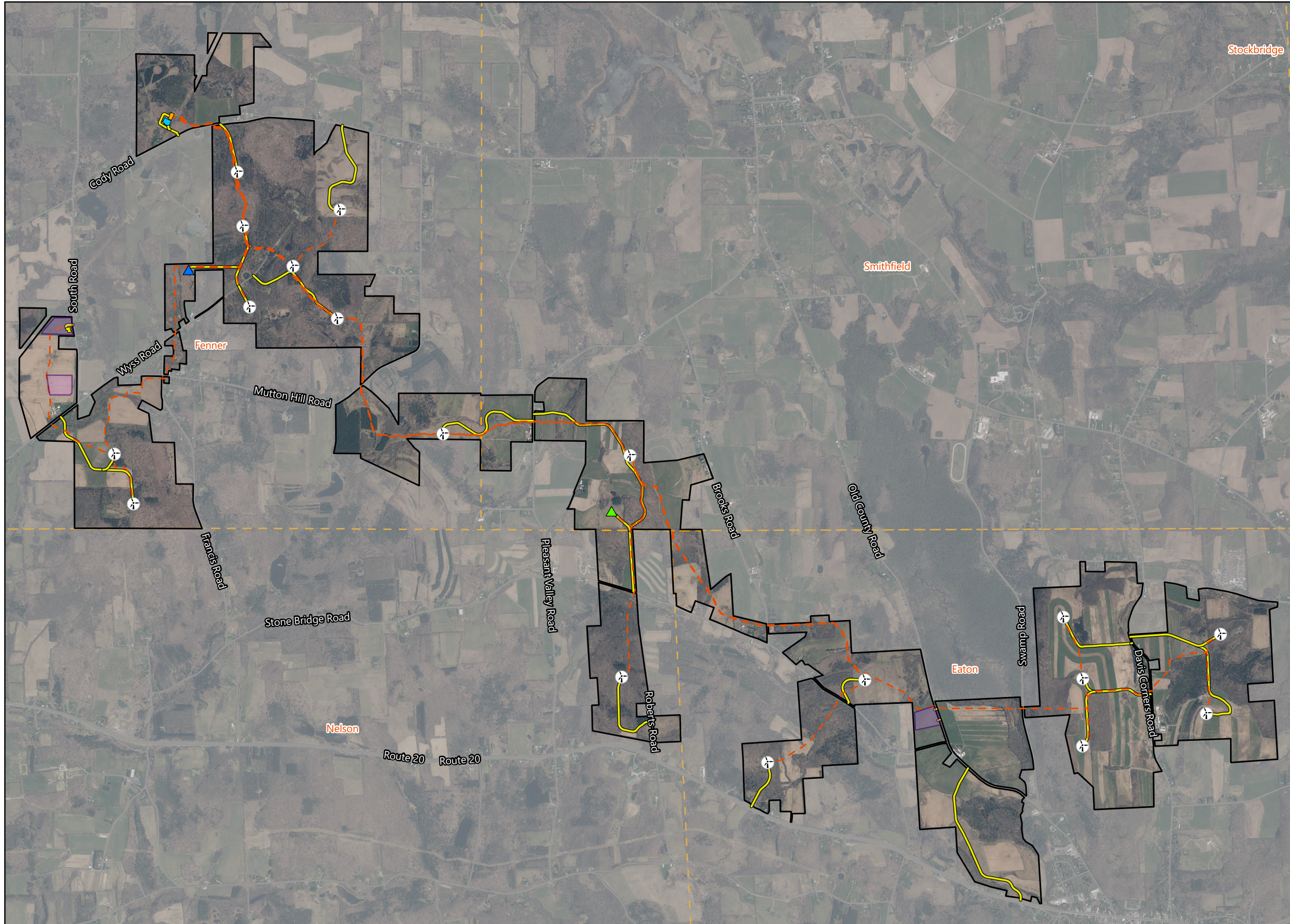


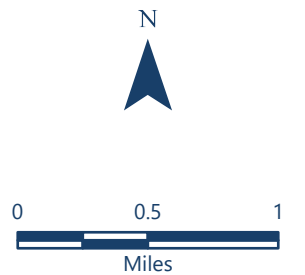
# Facility Layout

## Hoffman Falls Wind Project

Madison County, New York



- Wind Turbine
- Met Tower
- ADLS Tower
- Access Road
- Underground Collection Line
- Point of Interconnection
- Collection Substation
- Operations & Maintenance Building
- Laydown Yard
- Facility Site
- Town Boundary



Developed: 3/12/2026

Basemap Reference: NYS DPS "2022" orthoimagery map service.

